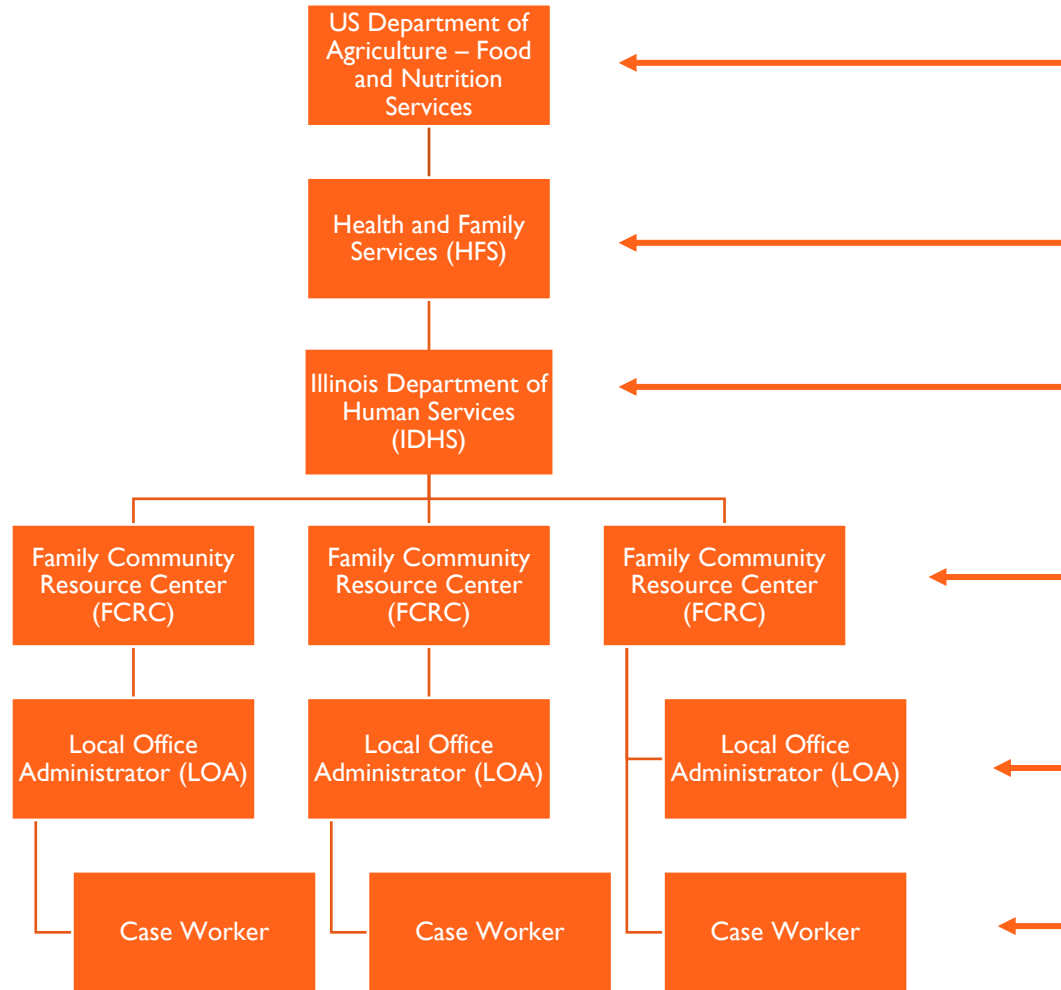


# Key Government Stakeholders



USDA FNS – federal dept that regulates SNAP, authorizes and monitors retailers

HFS - the state government body making policy decisions

IDHS - the government body that administers the benefit and processes the applications

FCRCs are a subsection of IDHS, often referred to as the 'local public aid office'. This is the physical place that an application gets sent and processed.

Local Office Administrators run the local office, similar to an office manager.

Case workers receive applications and approve or deny benefit applications.



# 2026 Income Limits

Household Size	Maximum Allotment	Gross Income	Gross Income (Qualifying Member)
1	\$298.00	\$2,152.00	\$2,608.00
2	\$546.00	\$2,909.00	\$3,525.00
3	\$785.00	\$3,665.00	\$4,441.00
4	\$994.00	\$4,421.00	\$5,358.00
5	\$1,183.00	\$5,177.00	\$6,275.00
6	\$1,421.00	\$5,934.00	\$7,191.00

[WAG 25-03-02 \(I\) SNAP](#)



# What counts as income?

IDHS counts any money received in the last 30 days prior to application. This is any money received from any source other than a loan.

<b>Earned Income</b>	<b>Unearned Income</b>
Salary or hourly wages	Cash assistance (AABD, TANF)
Self-employment	Social Security – Survivors, Disability, and Retirement
Money received from “odd jobs”	Supplemental Security Income
Rental property	Any money received from family and friends that is not expected to be repaid
Money from on-the-job training	Unemployment Insurance
	Child Support
	Pensions



# The Type of Utility Matters More than the Cost

See WAG 13-01-08-b <https://www.dhs.state.il.us/page.aspx?item=16170>

